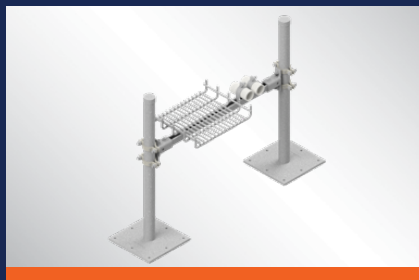




Rapid Roof

Support System



ISAT
TOTAL SUPPORT



Innovation



Engineering



BIM



Fabrication

877-999-ISAT (4728) | supports@isatts.com

A Division of Tomarco Contractor Specialties Inc.

V1.4

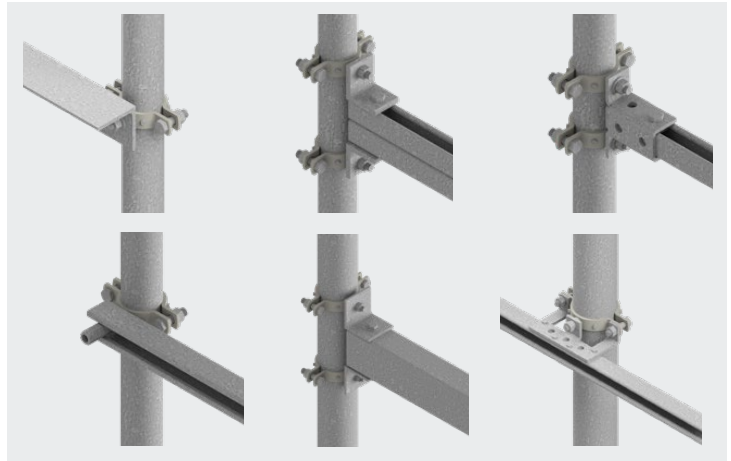
ISAT's Rapid Roof Support System

ISAT's Rapid Roof Support System is revolutionizing the way that equipment and distributed utilities are supported. No other system can provide the speed, flexibility and strength of the Rapid Roof System. Because of our system's unique modular design, it can adapt quickly and easily to meet virtually any project requirement.

- ISAT's Universal Stanchion Clamp (USC) Provides Field Flexibility and Adjustability
- ISAT Pipe Stanchion (PS) and Stanchion Base (SB) Supports in Stock for Quick Delivery
- ISAT's Universal Shelf Bracket (USB) Provides Single Post Support Options
- 100% Bolt Up Construction - No Welding Required
- All Support Members are Precut and Prepunched for Ease of Assembly in the Field



Universal Stanchion Clamp USC
(Patent Pending)

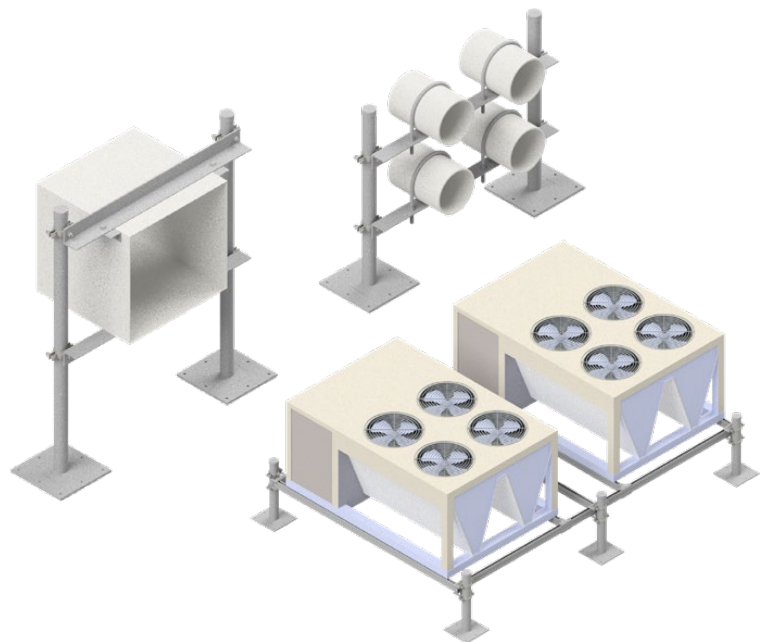


USC Clamps onto ISAT Pipe Stanchions - Weldless Connection.
Works with Strut, Angle or Square Tube.

ISAT's Rapid Roof Support System

The International Building Code (IBC) requires that rooftop equipment and distributed utility systems are positively attached to the structure to resist loads caused by seismic, wind and gravity forces. PE stamped submittal and layout drawings are required to analyze the forces and ensure that all supports are designed to resist the anticipated loads.

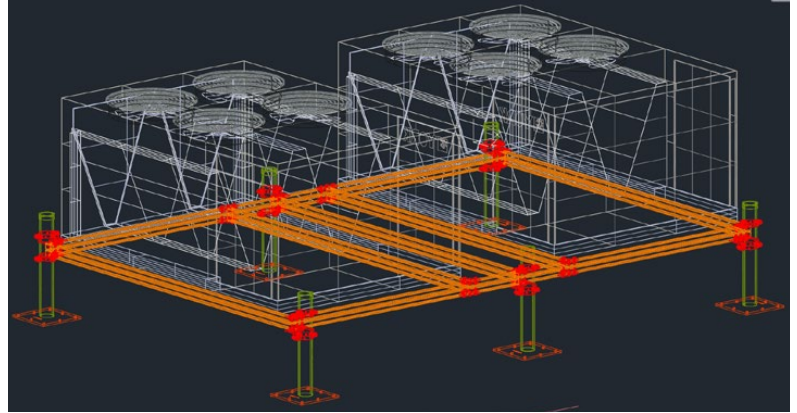
- ISAT Engineers Work with Customers to Value Engineer the Ideal Support Solution
- Pre-Engineered and PE Stamped Design Documents Reduce Turnaround Time
- 2D and 3D Design Layout Services
- Full Suite of Revit Families Available for all Supports



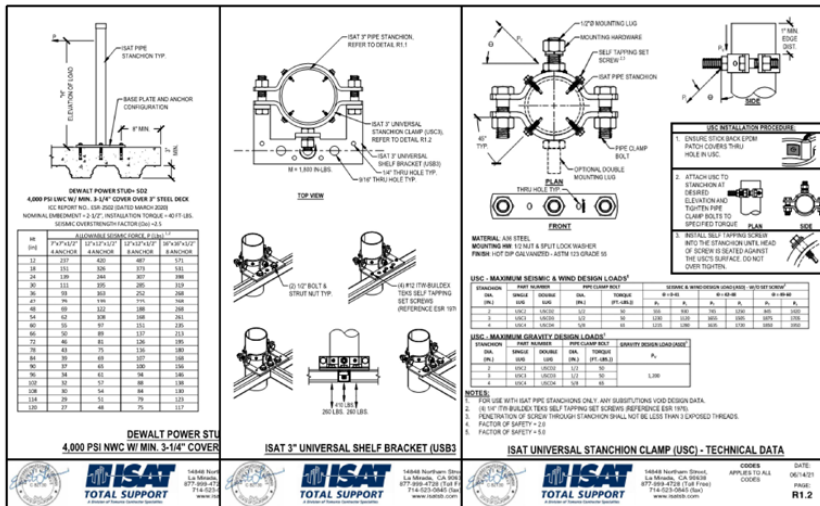
Fully Engineered Support Solutions for
MEP Utilities (Pipe, Duct & Conduit) Equipment

Revit Families Available For All Rapid Roof Assemblies and Sub Components

- Free Revit Families for the Rapid Roof Support System (Contact Your ISAT Rep)
- Families are LOD 400 & Fully Parametric
- Individual Components can be Assembled to Create Custom Support Solutions
- Extract Support Information Directly from Revit to Simplify the Ordering Process



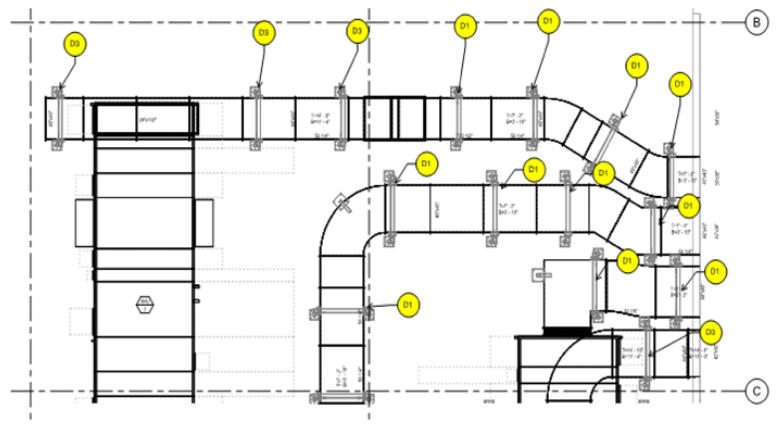
The Rapid Roof System Is Fully Engineered To Resist Gravity, Wind, Seismic, and Thermal Forces



- All Data Is Backed Up By Engineering Analysis and Lab Testing (Available Upon Request)
- PE Stamped Product Submittal Documents For Every Component
- Pre-Engineered Concrete Anchorage Details For Most Common Applications
- Proprietary Cast-in-Place Anchor Solutions Eliminate Concrete Drilling and Setting of Anchors in the Field
- Custom Engineered Support Solutions

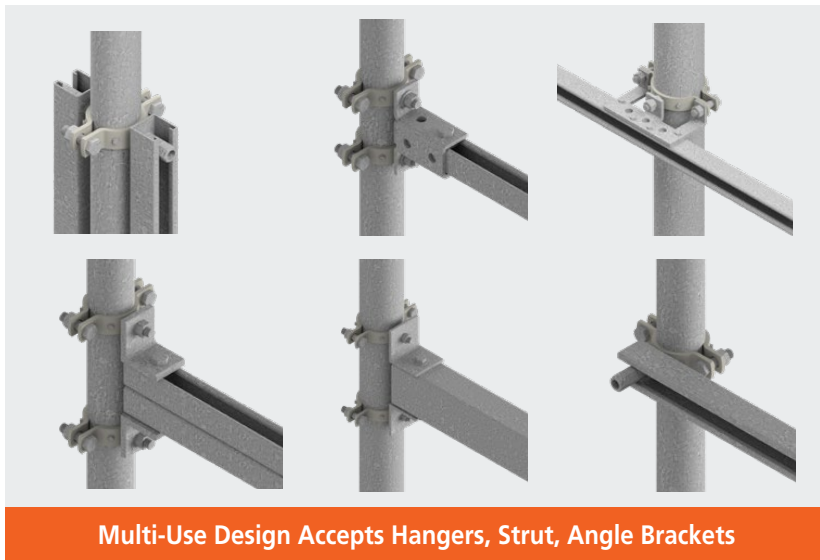
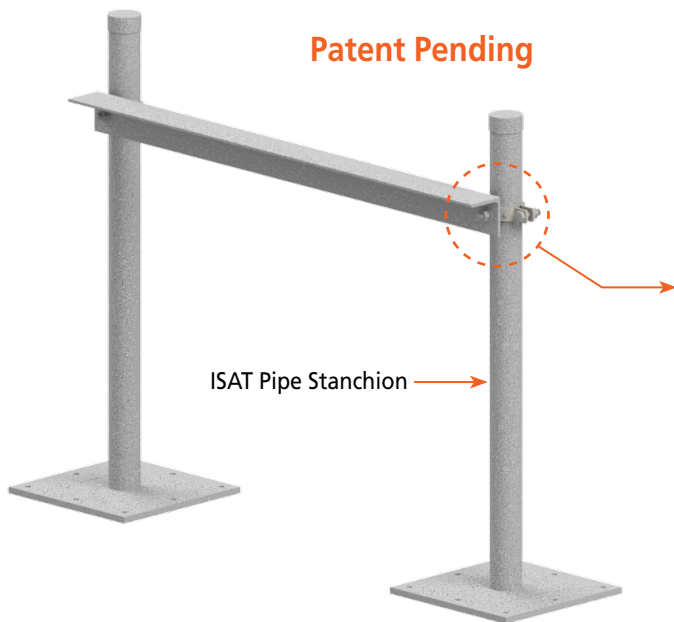
ISAT's In-House Engineering and VDC Staff Can Fully Engineer and Coordinate Your Support Design

- Value Engineered Design to Meet Contractor and Project Requirements
- PE Stamped Detail for Each Support Type
- 2D or 3D Support Layout Drawings with Support Tagging
- Supports are Shipped with Corresponding Tag for Ease of Install
- Estimating Services Available



ISAT Universal Stanchion Clamp (USC)

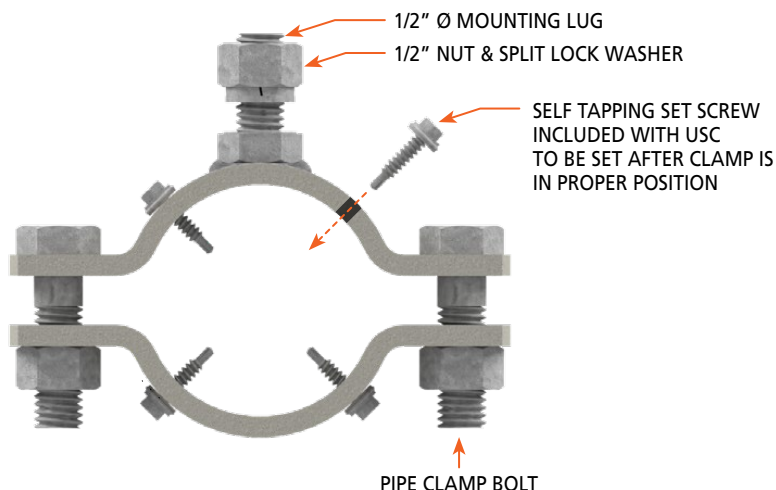
The Weldless Stanchion Connection for Every Application



Multi-Use Design Accepts Hangers, Strut, Angle Brackets

ISAT (USC) Clamp is Manufactured with 1/2" Mounting Lugs

- No Welding, Simply Clamp in Place
- 1,200 Lb. Capacity Per USC for Gravity Loads
- Wind and Seismically Rated and Tested
- Predrilled Holes in USC to Accept Set Screws
- Single and Double Sided Mounting Lugs
- A36 Steel - Hot Dipped Galvanized - ASTM 123 GRADE 55



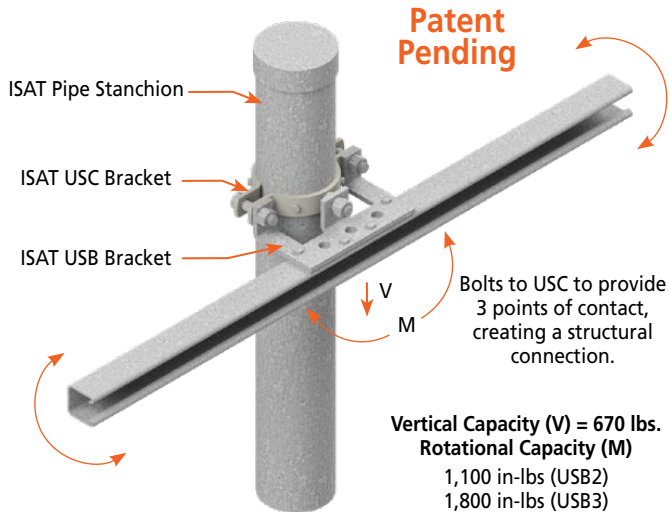
Neoprene washer and under wrap creates a water tight barrier.

Ordering Information

Part #	ISAT Pipe Stanchion Dia.	Mounting Legs	Pipe Clamp Bolt	
			Dia. (in.)	Install Torque
USC2	2"	Single	1/2"	50
USCD2		Double		
USC3	3"	Single	1/2"	50
USCD3		Double		
USC4	4"	Single	5/8"	65
USCD4		Double		

ISAT Universal Shelf Bracket (USB)

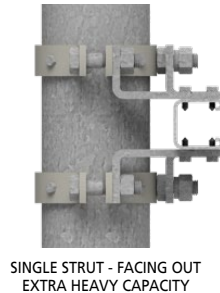
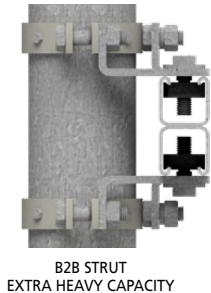
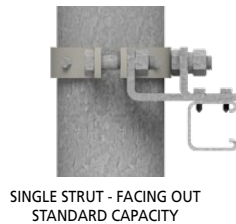
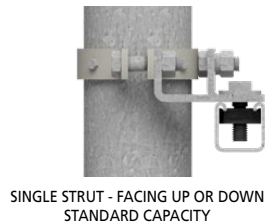
Single Post Shelf Bracket that Provides Strength In All Directions



ISAT's Universal Shelf Bracket (USB) bolts on the USC to create a single post work platform that can resist loads in all directions.

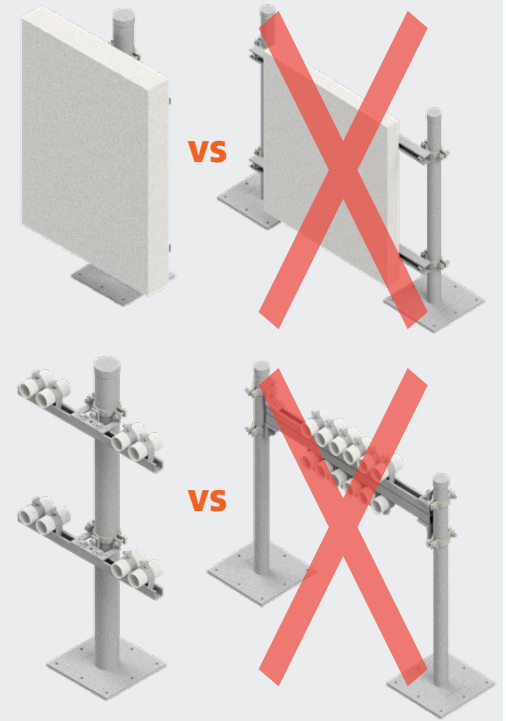
Traditionally, this would only be possible with a welded connection or with a two-post design.

- **USB2:** Works with ISAT 2" USC & Stanchion
- **USB3:** Works with ISAT 3" USC & Stanchion



Single Post Design Results in 50% Reduction of:

- Roof Penetrations
- Support Material
- Anchor Installation
- Freight Cost
- Laydown Area
- Installation Time



Use The USB To Build Equipment Surrounds, Catwalks, Platforms, Equipment Bases, Etc.



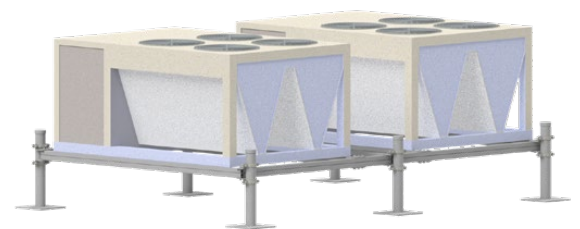
SPLICE OR INTERMEDIATE
SUPPORT



T-CONNECTION



CORNER CONNECTION



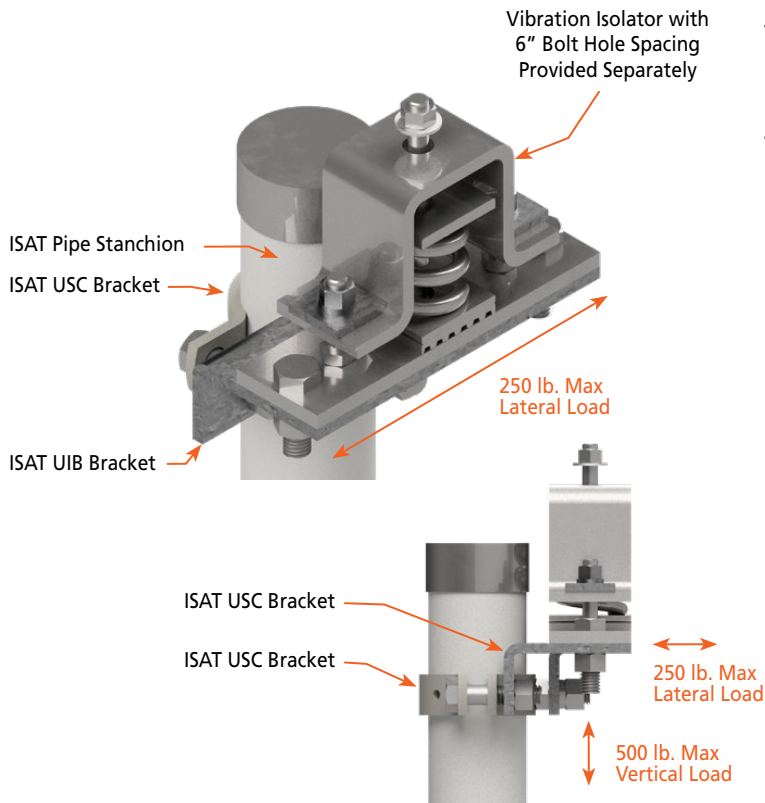
ISAT Universal Isolator Bracket (UIB)

Single Post Shelf Bracket that Provides Strength In All Directions

ISAT's Universal Isolator Bracket (UIB) bolts on to the USC to create a platform to reduce the transmission of noise and vibration into supporting structures from supported mechanical equipment.

The ISAT UIB is designed to work with any Spring isolator housing having a 6" bolt hole pattern, including the Kinetics KCI and Caldyn JQ Isolators

- **UIB2:** Works with ISAT 2" USC & Stanchion
- **UIB3:** Works with ISAT 3" USC & Stanchion
- **UIB4:** Works with ISAT 4" USC & Stanchion



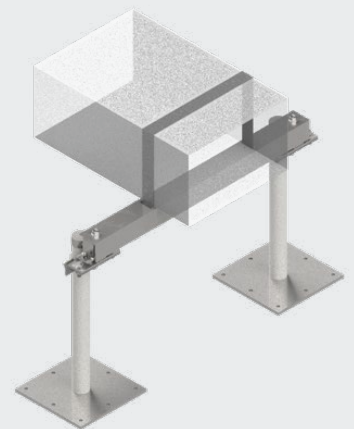
ISAT UIB Bracket with Strut Bridge



ISAT UIB Bracket with L-Angle Bridge



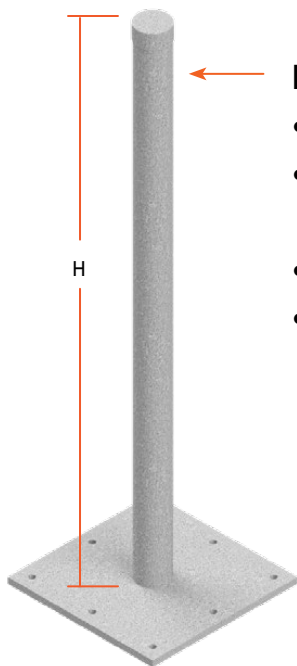
Round Duct Isolation on Strut Bridge



Rectangular Duct Isolation on L-Angle Bridge

ISAT Stanchion

Pre-Engineered and Available In Stock



ISAT Pipe Stanchion (PS)

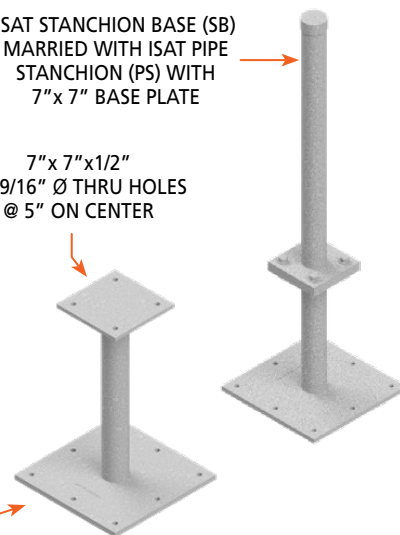
- Available in 2", 3" and 4" Nominal Diameters
- Standard Heights in 12" Increments (Stocked to 10' Height, Custom Heights Available Upon Request)
- Galvanized Top Cap Included
- Hot Dipped Galvanized - ASTM 123 GRADE 55

ISAT Pipe Stanchion Base (SB)

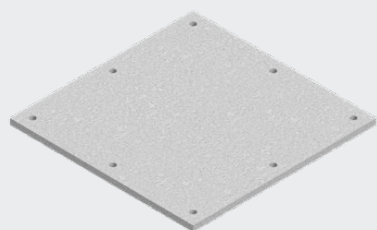
- Available in 2", 3" and 4" Nominal Diameters
- 12", 18" & 24" Standard Heights (Custom Heights Available Upon Request)
- May be Used as Anchor Point for Bracing or Guy Wires
- Marries with ISAT Stanchion w/ 7"x7" Base Plate and (4) 1/2" Bolted Connection
- Hot Dipped Galvanized - ASTM 123 GRADE 55

ISAT STANCHION BASE (SB)
MARRIED WITH ISAT PIPE
STANCHION (PS) WITH
7"x7" BASE PLATE

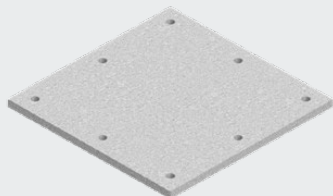
7"x7"x1/2"
(4) 9/16" Ø THRU HOLES
@ 5" ON CENTER



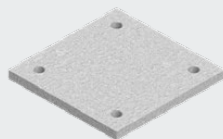
Base Plate Options



16" X 16" X 1/2"
(8) 9/16" Ø THRU HOLES
@ 7" ON CENTER



12" X 12" X 1/2"
(8) 9/16" Ø THRU HOLES
@ 5" ON CENTER



7" X 7" X 1/2"
(4) 9/16" Ø THRU HOLES
@ 5" ON CENTER

Optional Neoprene Baseplate Pad

Add "N" to the end of the part number to order stanchion with a 1/4" thick neoprene pad adhered to the bottom side of the baseplate.
Custom baseplate sizes available upon request.

Ordering Information

Model	Stanchion Dia.	Stanchion Height	Base Plate
PS	2", 3" or 4"	Standard Heights in 12" Increments. Custom Heights Available	00 - None
			77 - 7"x7"
			1212 - 12"x12"
			1616 - 16"x16"
SB	2", 3" or 4"	Standard Heights 12", 18" or 24". Custom Heights Available	00 - None
			77 - 7"x7"
			1212 - 12"x12"
			1616 - 16"x16"

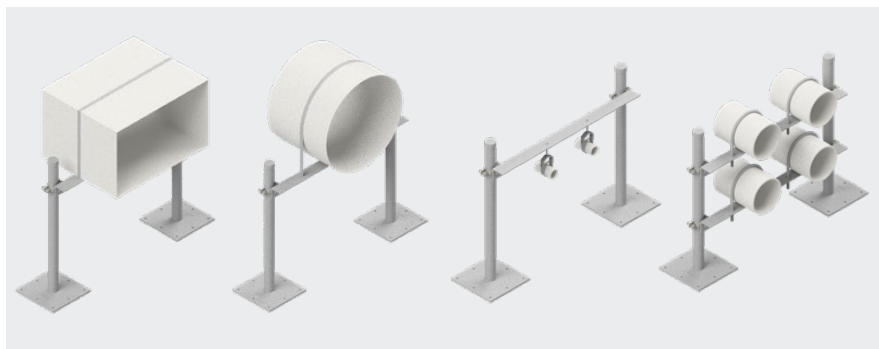
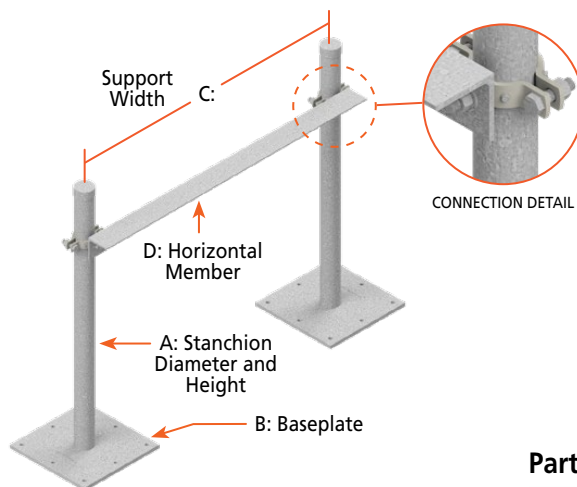
MAX. LATERAL FORCE (P) LBS.							
HEIGHT (H) INCHES	NOMINAL STANCHION DIA.			HEIGHT (H) INCHES	NOMINAL STANCHION DIA.		
	2"	3"	4"		2"	3"	4"
12	916	2,020	3,416	72	115	336	569
18	611	1,347	2,277	78		310	525
24	458	1,010	1,708	84		288	488
30	366	808	1,366	90		255	455
36	305	673	1,138	96		210	427
42	261	577	976	102		175	401
48	223	505	854	108		147	353
54	203	449	759	114			300
60	166	404	683	120			257
66	137	367	621				

PFL Assembly

Post Frame - L-Member

Suitable For: Round or Rectangular Duct & Piping Systems

Assembly Contains: Stanchions, USC's, Horizontal "L" Members, Connection Hardware



- Support Shipped Partially Assembled (Field Assembly Is Required)
- Horizontal Member Cut To Length and Predrilled To Receive Connection Hardware
- All Components Hot Dip Galvanized - ASTM 123 Grade 55
- Custom Configurations Available Upon Request

Part#: PFL - A, B, C, D, E

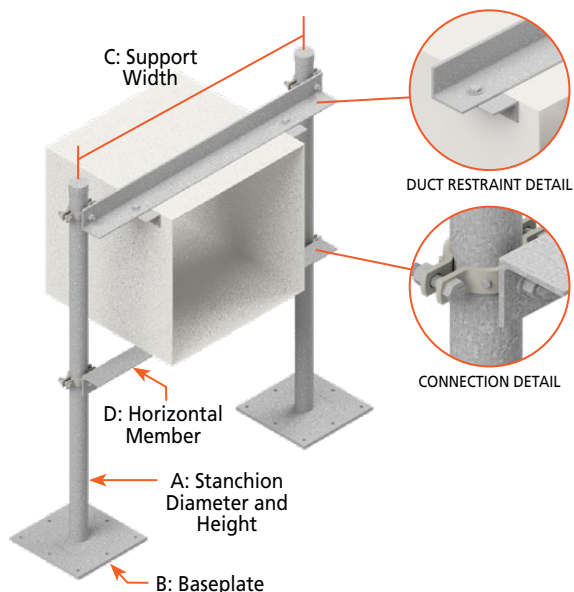
A: STANCHION DIAMETERS & HEIGHT				B: BASE PLATE		D: HORIZONTAL MEMBER		E: # OF TIERS	
*01	2" DIA. 24" TALL	*07	3" DIA. 96" TALL	*01	NO BASE PLATE	*01	L 2.5" X 2.5" X 3/16"	*01	ONE
*02	2" DIA. 48" TALL	*08	4" DIA. 24" TALL	*02	7" X 7" X 1/2"	*02	L 2.5" X 2.5" X 1/4"	*02	TWO
*03	2" DIA. 72" TALL	*09	4" DIA. 48" TALL	*03	12" X 12" X 1/2"	*03	L 3" X 3" X 1/4"	*03	THREE
*04	3" DIA. 24" TALL	*10	4" DIA. 72" TALL	*04	16" X 16" X 1/2"	*04	L 3.5" X 3.5" X 1/4"	*04	FOUR
*05	3" DIA. 48" TALL	*11	4" DIA. 96" TALL			*05	L 4" X 4" X 1/4"		
*06	3" DIA. 72" TALL	*12	4" DIA. 120" TALL						

PFLD Assembly

Post Frame - L-Member and Duct Restraint

Suitable For: Rectangular Duct Requiring Upper Duct Restraint

Assembly Contains: Stanchions, USC's, Upper and Lower Horizontal "L" Members, Duct Restraint Brackets, Connection Hardware



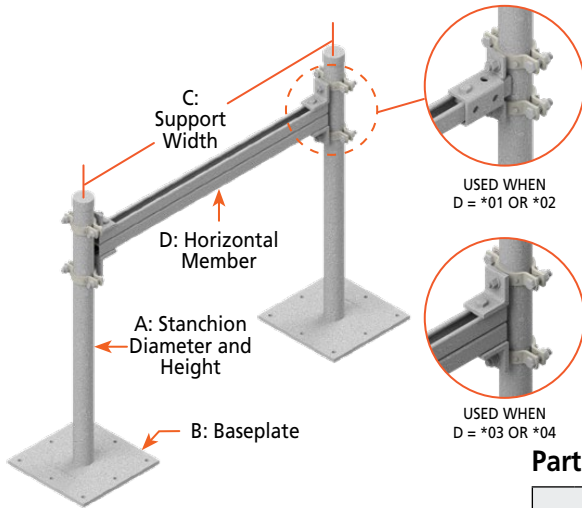
- Support Shipped Partially Assembled (Field Assembly Is Required)
- Horizontal Member Cut To Length and Predrilled To Receive Connection Hardware
- Holes In Horizontal Member To Attach Duct Restraint Bracket To Be Drilled In The Field
- All Components Hot Dip Galvanized - ASTM 123 Grade 55
- Custom Configurations Available Upon Request

Part #: PFLD - A, B, C, D, E

A STANCHION DIAMETERS & HEIGHT				B BASE PLATE		D HORIZONTAL MEMBER		E # OF TIERS	
*01	2" DIA. 24" TALL	*07	3" DIA. 96" TALL	*01	NO BASE PLATE	*01	L 2.5" X 2.5" X 3/16"	*01	ONE
*02	2" DIA. 48" TALL	*08	4" DIA. 24" TALL	*02	7" X 7" X 1/2"	*02	L 2.5" X 2.5" X 1/4"	*02	TWO
*03	2" DIA. 72" TALL	*09	4" DIA. 48" TALL	*03	12" X 12" X 1/2"	*03	L 3" X 3" X 1/4"		
*04	3" DIA. 24" TALL	*10	4" DIA. 72" TALL	*04	16" X 16" X 1/2"	*04	L 3.5" X 3.5" X 1/4"		
*05	3" DIA. 48" TALL	*11	4" DIA. 96" TALL			*05	L 4" X 4" X 1/4"		
*06	3" DIA. 72" TALL	*12	4" DIA. 120" TALL						

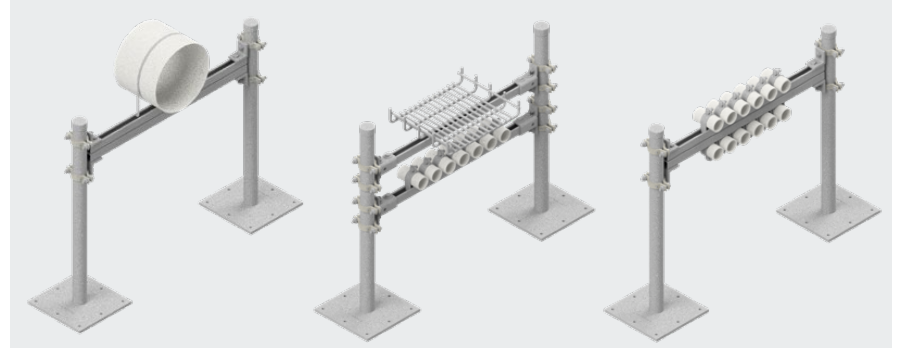
PFS Assembly

Post Frame - Strut Member



Suitable For: HVAC Duct, Piping and Electrical Systems

Assembly Contains: Stanchions, USC's, Horizontal Strut Members, Connection Hardware



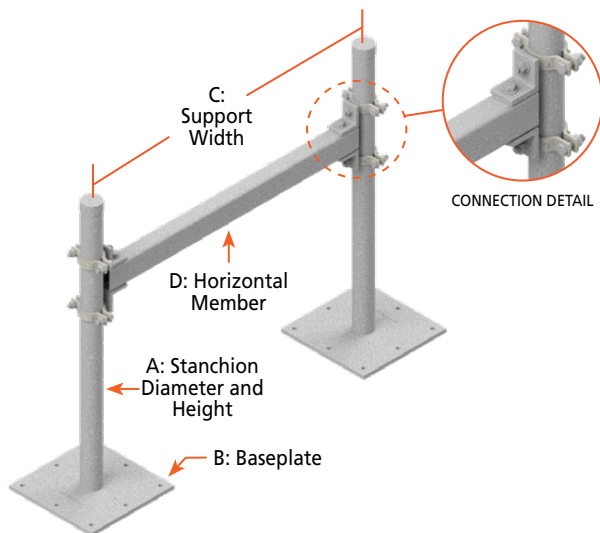
Part #: PFS - A, B, C, D, E

A STANCHION DIAMETERS & HEIGHT				B BASE PLATE		D HORIZONTAL MEMBER		E # OF TIERS	
*01	2" DIA. 24" TALL	*07	3" DIA. 96" TALL	*01	NO BASE PLATE	*01	13/16" X 1-5/8" (B2B) 14 GA. STRUT	*01	ONE
*02	2" DIA. 48" TALL	*08	4" DIA. 24" TALL	*02	7" X 7" X 1/2"	*02	1-5/8" X 1-5/8" 12 GA. STRUT	*02	TWO
*03	2" DIA. 72" TALL	*09	4" DIA. 48" TALL	*03	12" X 12" X 1/2"	*03	1-5/8" X 1-5/8" (B2B) 12 GA. STRUT	*03	THREE
*04	3" DIA. 24" TALL	*10	4" DIA. 72" TALL	*04	16" X 16" X 1/2"	*04	3-1/4" X 3-1/4" (B2B) 12 GA. STRUT	*04	FOUR
*05	3" DIA. 48" TALL	*11	4" DIA. 96" TALL						
*06	3" DIA. 72" TALL	*12	4" DIA. 120" TALL						

- Support Shipped Partially Assembled (Field Assembly Is Required)
- Horizontal Member Cut To Length and Predrilled To Receive Connection Hardware
- All Components Hot Dip Galvanized - ASTM 123 Grade 55
- Custom Configurations Available Upon Request

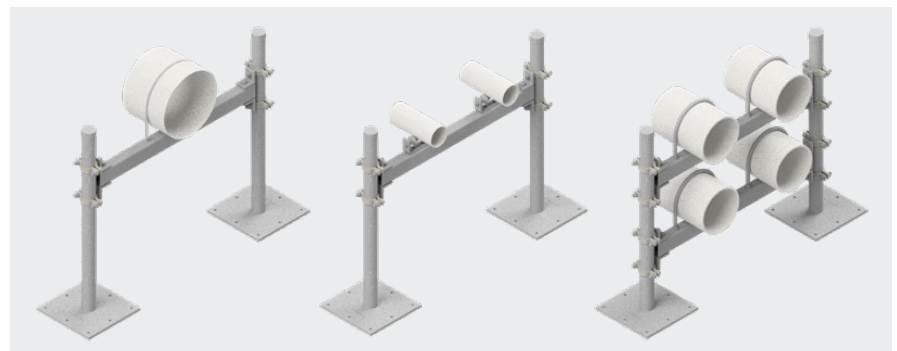
PFH Assembly

Post Frame - Structural Tube (HSS) Member



Suitable For: HVAC Duct, Piping and Electrical System Supports Requiring Additional Capacity or Wide Spans

Assembly Contains: Stanchions, USC's, Horizontal Structural Tube Members, Connection Hardware



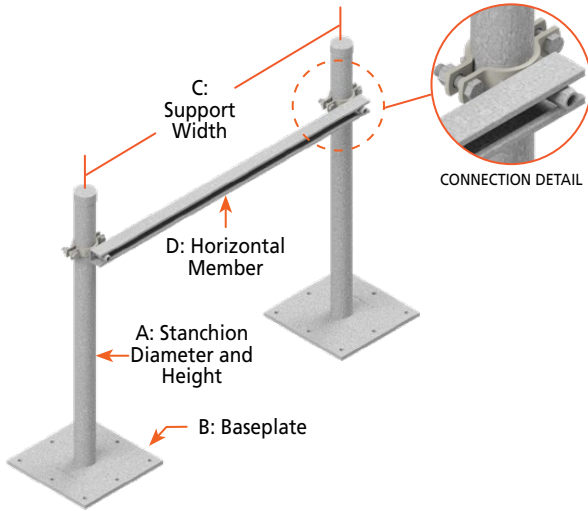
Part #: PFH - A, B, C, D, E

A STANCHION DIAMETERS & HEIGHT				B BASE PLATE		D HORIZONTAL MEMBER		E # OF TIERS	
*01	2" DIA. 24" TALL	*07	3" DIA. 96" TALL	*01	NO BASE PLATE	*01	HSS 2" X 2" X 3/16"	*01	ONE
*02	2" DIA. 48" TALL	*08	4" DIA. 24" TALL	*02	7" X 7" X 1/2"	*02	HSS 2" X 2" X 1/4"	*02	TWO
*03	2" DIA. 72" TALL	*09	4" DIA. 48" TALL	*03	12" X 12" X 1/2"	*03	HSS 3" X 3" X 3/16"	*03	THREE
*04	3" DIA. 24" TALL	*10	4" DIA. 72" TALL	*04	16" X 16" X 1/2"	*04	HSS 3" X 3" X 1/4"	*04	FOUR
*05	3" DIA. 48" TALL	*11	4" DIA. 96" TALL			*05	HSS 4" X 4" X 3/16"		
*06	3" DIA. 72" TALL	*12	4" DIA. 120" TALL						

- Support Shipped Partially Assembled (Field Assembly Is Required)
- Horizontal Member Cut To Length and Predrilled To Receive Connection Hardware
- All Components Hot Dip Galvanized - ASTM 123 Grade 55
- Custom Configurations Available Upon Request

PFSS Assembly

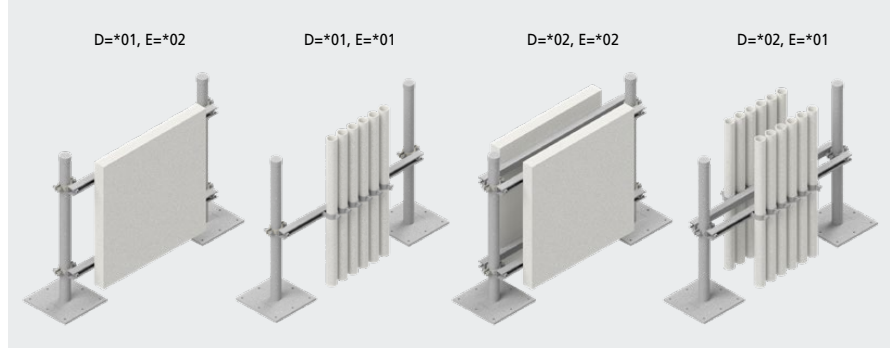
Post Frame - Surface Mounted Strut Member



- Support Shipped Partially Assembled (Field Assembly Is Required)
- Horizontal Member Cut To Length and Predrilled To Receive Connection Hardware
- All Components Hot Dip Galvanized - ASTM 123 Grade 55
- Custom Configurations Available Upon Request

Suitable For: Panel Boards, Vertical Utility Systems

Assembly Contains: Stanchions, USC's, Horizontal Strut Members, Connection Hardware

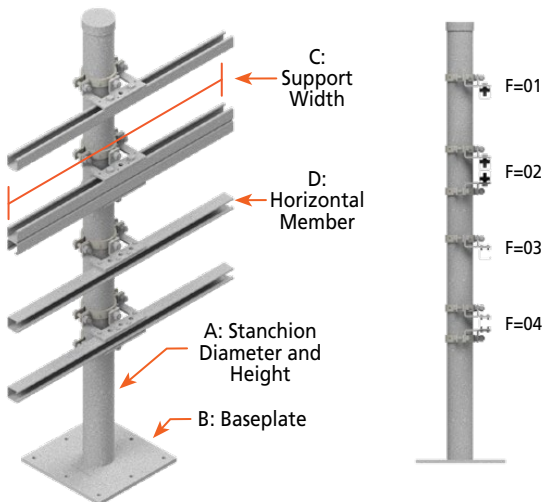


Part #: PFSS - A, B, C, D, E

A STANCHION DIAMETERS & HEIGHT				B BASE PLATE	D SINGLE OR DOUBLE	E # OF TIERS	
*01	2" DIA. 24" TALL	*07	3" DIA. 96" TALL	*01	NO BASE PLATE	*01	ONE
*02	2" DIA. 48" TALL	*08	4" DIA. 24" TALL	*02	7" X 7" X 1/2"	*02	TWO
*03	2" DIA. 72" TALL	*09	4" DIA. 48" TALL	*03	12" X 12" X 1/2"	*03	THREE
*04	3" DIA. 24" TALL	*10	4" DIA. 72" TALL	*04	16" X 16" X 1/2"	*04	FOUR
*05	3" DIA. 48" TALL	*11	4" DIA. 96" TALL				
*06	3" DIA. 72" TALL	*12	4" DIA. 120" TALL				

SPSH Assembly

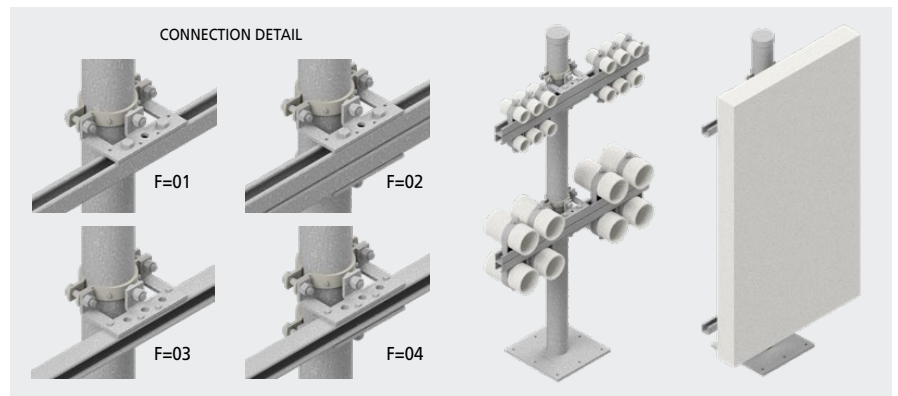
Single Post - Horizontal Strut Member



- Support Shipped Partially Assembled (Field Assembly Is Required)
- All Components Hot Dip Galvanized - ASTM 123 Grade 55
- Custom Configurations Available Upon Request

Suitable For: Panel Boards, Piping and Electrical Systems

Assembly Contains: Stanchions, USC's, USB's, Horizontal Strut Members, Connection Hardware

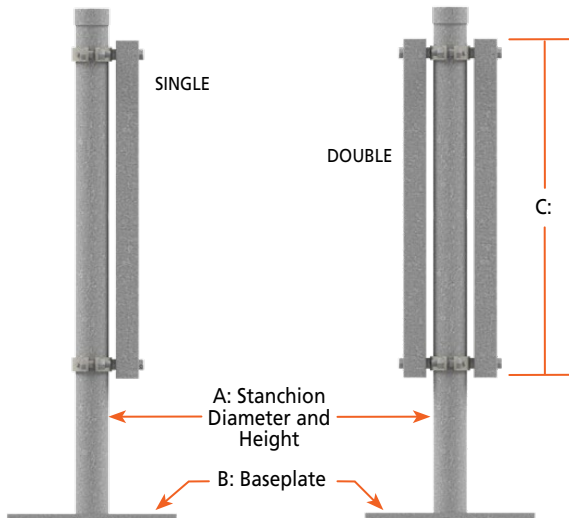


Part #: SPSH - A, B, C, D, E, F

A STANCHION DIAMETERS & HEIGHT				B BASE PLATE	D HORIZONTAL MEMBER	E # OF TIERS	F INSTALLATION OPTION
*01	2" DIA. 24" TALL	*05	3" DIA. 48" TALL	*01	NO BASE PLATE	*01	ONE
*02	2" DIA. 48" TALL	*06	3" DIA. 72" TALL	*02	7" X 7" X 1/2"	*02	TWO
*03	2" DIA. 72" TALL	*07	3" DIA. 96" TALL	*03	12" X 12" X 1/2"	*03	THREE
*04	3" DIA. 24" TALL			*04	16" X 16" X 1/2"	*04	FOUR

SPSV Assembly

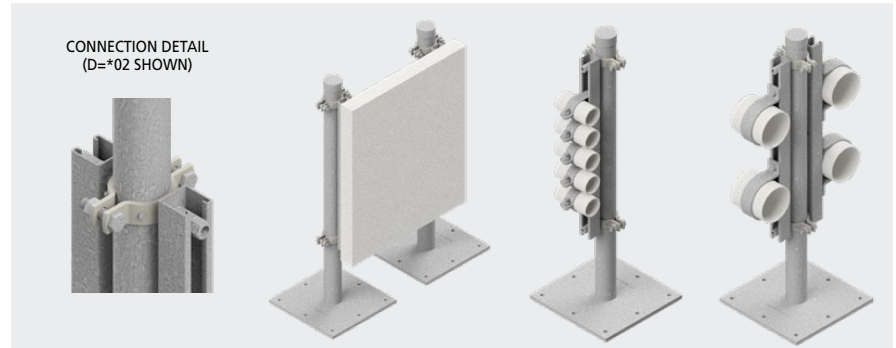
Single Post - Vertical Strut Member



- Support Shipped Partially Assembled (Field Assembly Is Required)
- Horizontal Member Cut To Length and Predrilled To Receive Connection Hardware
- All Components Hot Dip Galvanized - ASTM 123 Grade 55
- Custom Configurations Available Upon Request

Suitable For: Panel Boards, Piping and Electrical Systems

Assembly Contains: Stanchions, USC's, Vertical Strut Members, Connection Hardware

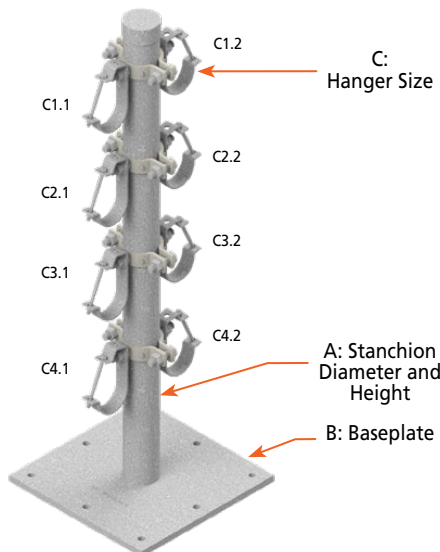


Part #: SPSV - A, B, C, D

A STANCHION DIAMETERS & HEIGHT				B BASE PLATE		D SINGLE OR DOUBLE	
*01	2" DIA. 24" TALL	*07	3" DIA. 96" TALL	*01	NO BASE PLATE	*01	SINGLE SIDED
*02	2" DIA. 48" TALL	*08	4" DIA. 24" TALL	*02	7" X 7" X 1/2"	*02	DOUBLE SIDED
*03	2" DIA. 72" TALL	*09	4" DIA. 48" TALL	*03	12" X 12" X 1/2"		
*04	3" DIA. 24" TALL	*10	4" DIA. 72" TALL	*04	16" X 16" X 1/2"		
*05	3" DIA. 48" TALL	*11	4" DIA. 96" TALL				
*06	3" DIA. 72" TALL	*12	4" DIA. 120" TALL				

SPJ Assembly

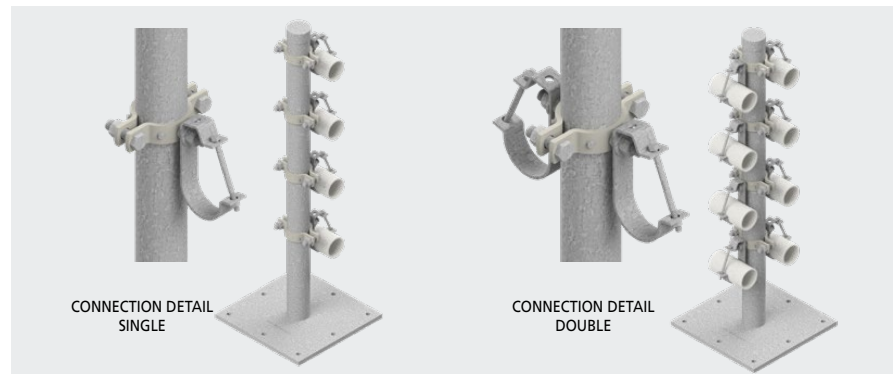
Single Post - J-Hangers



- Support Shipped Partially Assembled (Field Assembly Is Required)
- All Components Hot Dip Galvanized - ASTM 123 Grade 55
- Custom Configurations Available Upon Request

Suitable For: Piping and Electrical Conduit

Assembly Contains: Stanchions, USC's, J-Hangers, Connection Hardware

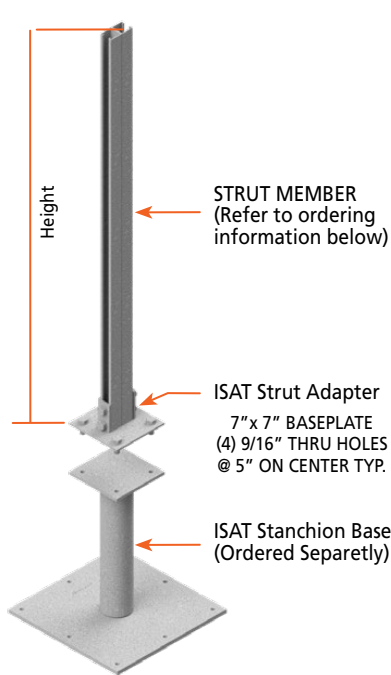


Part #: SPJ - A, B, C1.1, C1.2, C2.1, C2.2, C3.1, C3.2, C4.1, C4.2

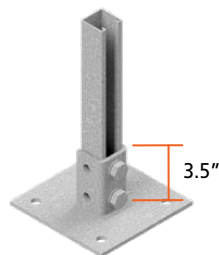
A STANCHION DIAMETERS & HEIGHT				B BASE PLATE		C HANGER SIZE			
*01	2" DIA. 24" TALL	*07	3" DIA. 96" TALL	*01	NO BASE PLATE	*00	NONE	*06	3"
*02	2" DIA. 48" TALL	*08	4" DIA. 24" TALL	*02	7" X 7" X 1/2"	*01	1"	*07	3-1/2"
*03	2" DIA. 72" TALL	*09	4" DIA. 48" TALL	*03	12" X 12" X 1/2"	*02	1-1/4"	*08	4"
*04	3" DIA. 24" TALL	*10	4" DIA. 72" TALL	*04	16" X 16" X 1/2"	*03	1-1/2"	*09	5"
*05	3" DIA. 48" TALL	*11	4" DIA. 96" TALL			*04	2"	*10	6"
*06	3" DIA. 72" TALL	*12	4" DIA. 120" TALL			*05	2-1/2"	*11	8"

ISAT Strut Adapter

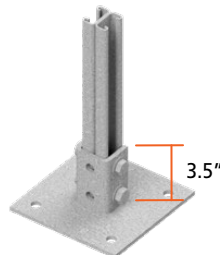
Pre-Engineered and Available In Stock



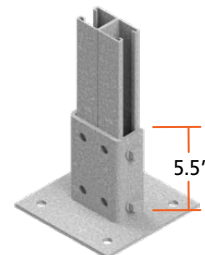
Refer to ISAT Detail R1.7 and R1.8 for technical data.



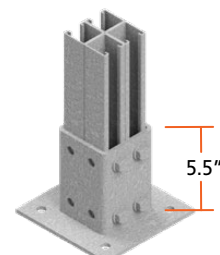
PART #: ISAT BP81
W/ 1-5/8" x 1-5/8" STRUT
(2) STRUT NUT ASSEMBLIES



PART #: ISAT BP81
W/ 1-5/8" x 13/16" B2B STRUT
(4) STRUT NUT ASSEMBLIES



PART #: ISAT BP82
W/ 1-5/8" x 1-5/8" B2B STRUT
(4) STRUT NUT ASSEMBLIES

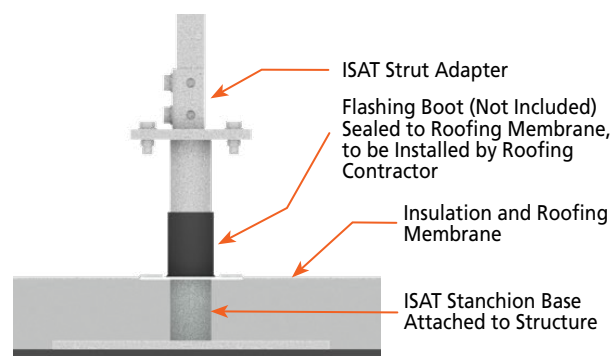


PART #: ISAT BP84
W/ 1-5/8" x 1-5/8" QUAD STRUT
(8) STRUT NUT ASSEMBLIES

ISAT'S STRUT ADAPTER OFFERS THE BEST OF BOTH WORLDS:

ISAT's Cylindrical Stanchion Base Allows for Easy and Effective Waterproofing for Rooftop Applications.

The ISAT Strut Adapter Enables the Transition from Pipe to Strut Members for Support Construction.

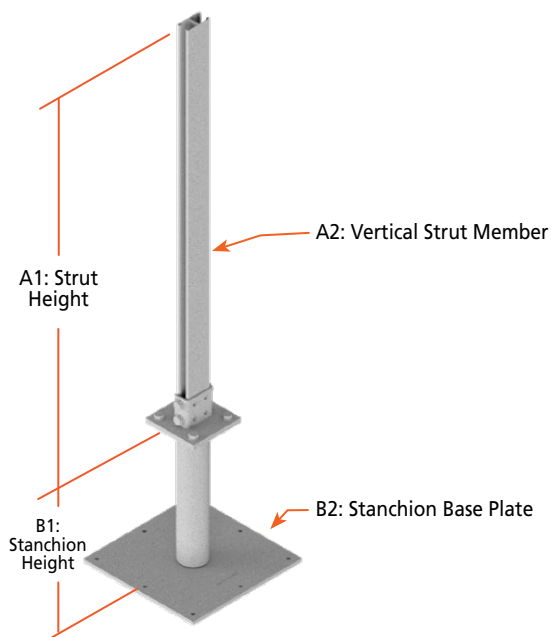


SPS Assembly

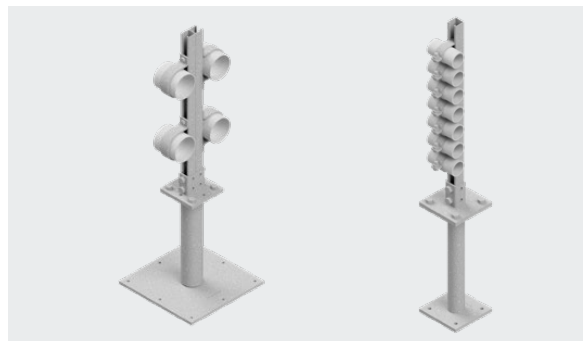
Single Post - Strut

Suitable For: Pipe and Electrical Systems, Refrigeration Lines

Assembly Contains: Stanchion Base, Strut Adapter, Strut Members, Connection Hardware



- Support Shipped Partially Assembled (Field Assembly Is Required)
- All Components Hot Dip Galvanized - ASTM 123 Grade 55
- Custom Configurations Available Upon Request



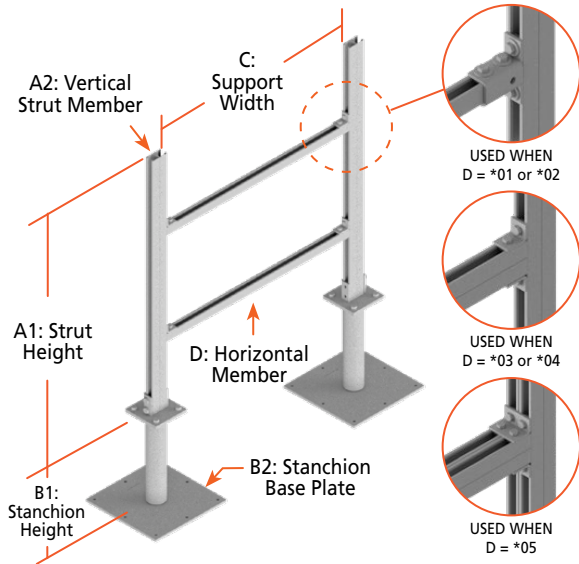
PART #: SPS -A1-A2-B1-B2

	A2 VERTICAL STRUT		B1 STANCHION BASE-HEIGHT		B2 STANCHION BASE PLATE
*01	1-5/8" x 1-5/8" 12 GA.	*00	NONE	*00	NO BASE PLATE
*02	1-5/8" x 13/16" (B2B) 14 GA.	*01	12"	*01	7" X 7" X 1/2"
*03	1-5/8" x 1-5/8" (B2B) 12 GA.	*02	18"	*02	12" X 12" X 1/2"
*04	1-5/8" x 1-5/8" (QUAD) 12 GA.	*03	24"	*03	16" X 16" X 1/2"

2" Dia. Stanchion provided when A=*01 or *02, 3" Dia. Stanchion provided when A=*03, 4" Dia. Stanchion provided when A=*04.

PSFS Assembly

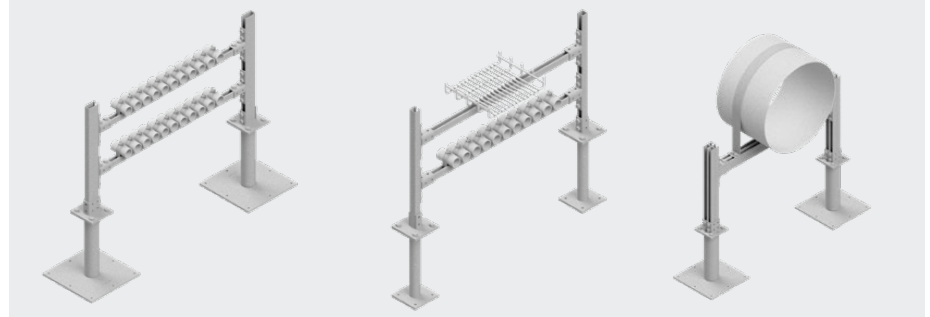
Post Strut Frame - Strut Member



- Support Shipped Partially Assembled (Field Assembly Is Required)
- Horizontal And Vertical Members Cut To Length
- All Components Hot Dip Galvanized - ASTM 123 Grade 55
- Custom Configurations Available Upon Request

Suitable For: HVAC Duct, Piping and Electrical Systems

Assembly Contains: Stanchion Bases, Strut Adapters, Vertical and Horizontal Strut Members, Connection Hardware



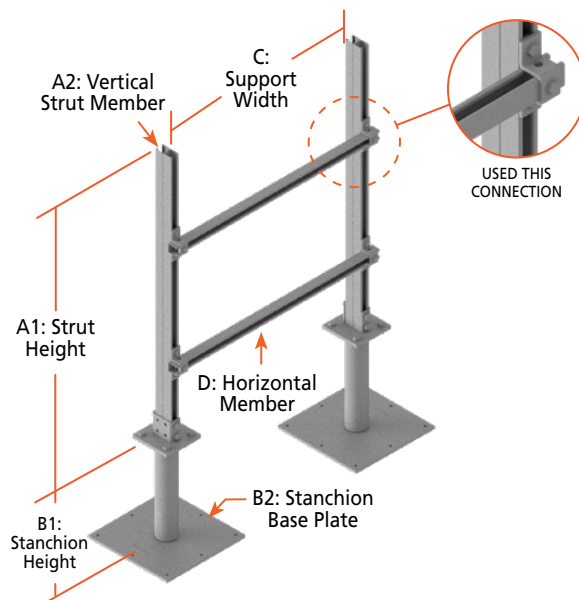
Part #: PSFS-A1-A2-B1-B2-C-D-E

A2 VERTICAL STRUT		B1 STANCHION BASE-HEIGHT		B2 STANCHION BASE PLATE		D HORIZONTAL STRUT		E # OF TIERS	
*01	1-5/8" x 1-5/8" 12 GA.	*00	NONE	*00	NO BASE PLATE	*01	1-5/8" x 1-5/8" 12 GA.	*01	ONE
*02	1-5/8" x 13/16" (B2B) 14 GA.	*01	12"	*01	7" X 7" X 1/2"	*02	1-5/8" x 13/16" (B2B) 14 GA.	*02	TWO
*03	1-5/8" x 1-5/8" (B2B) 12 GA.	*02	18"	*02	12" X 12" X 1/2"	*03	1-5/8" x 1-5/8" (B2B) 12 GA.	*03	THREE
*04	1-5/8" x 1-5/8" (QUAD) 12 GA.	*03	24"	*03	16" X 16" X 1/2"	*04	1-5/8" x 3-1/4" (B2B) 12 GA.	*04	FOUR
						*05	1-5/8" x 1-5/8" (QUAD) 12 GA. (ONLY AVAILABLE WHEN QUAD STRUT IS SELECTED AS THE VERTICAL MEMBER)		

2" Dia. Stanchion provided when A=*01 or *02, 3" Dia. Stanchion provided when A=*03, 4" Dia. Stanchion provided when A=*4.

PSFFS Assembly

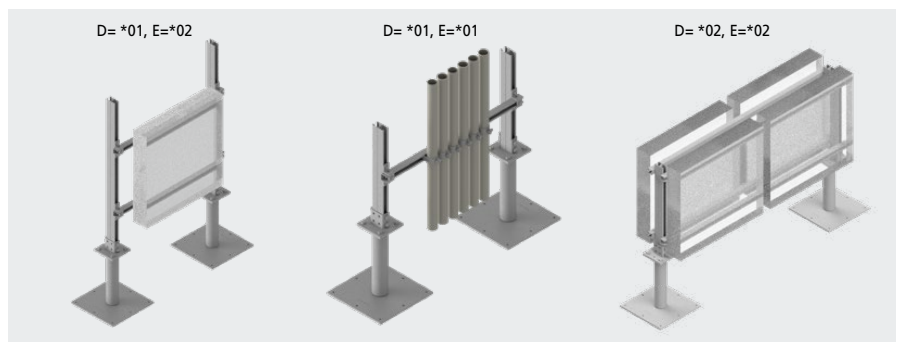
Post Strut Frame - Surface Mounted Strut Member



- Support Shipped Partially Assembled (Field Assembly Is Required)
- Horizontal And Vertical Members Cut To Length
- All Components Hot Dip Galvanized - ASTM 123 Grade 55
- Custom Configurations Available Upon Request

Suitable For: HVAC Duct, Piping and Electrical System Supports

Assembly Contains: Stanchion Bases, Strut Adapters, Vertical and Horizontal Strut Members, Connection Hardware

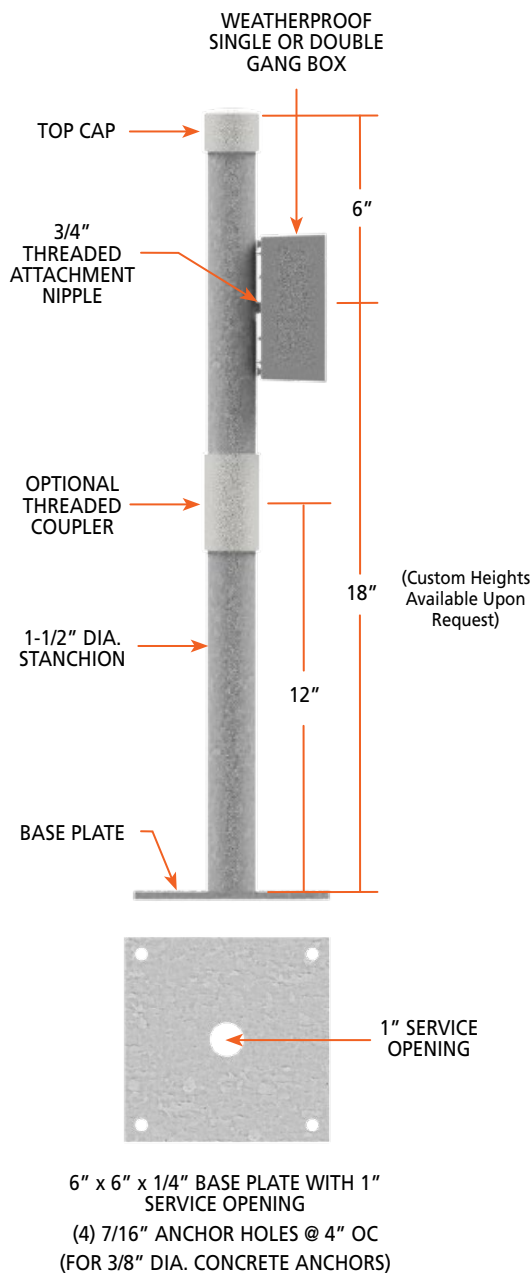


Part #: PSFFS-A1-A2-B1-B2-C-D-E

A2 VERTICAL STRUT		B1 STANCHION BASE-HEIGHT		B2 STANCHION BASE PLATE		D HORIZONTAL STRUT		E # OF TIERS	
*01	1-5/8" x 1-5/8" 12 GA.	*00	NONE	*00	NO BASE PLATE	*01	SINGLE SIDED	*01	ONE
*02	1-5/8" x 13/16" (B2B) 14 GA.	*01	12"	*01	7" X 7" X 1/2"	*02	DOUBLE SIDED	*02	TWO
*03	1-5/8" x 1-5/8" (B2B) 12 GA.	*02	18"	*02	12" X 12" X 1/2"			*03	THREE
*04	1-5/8" x 1-5/8" (QUAD) 12 GA.	*03	24"	*03	16" X 16" X 1/2"			*04	FOUR

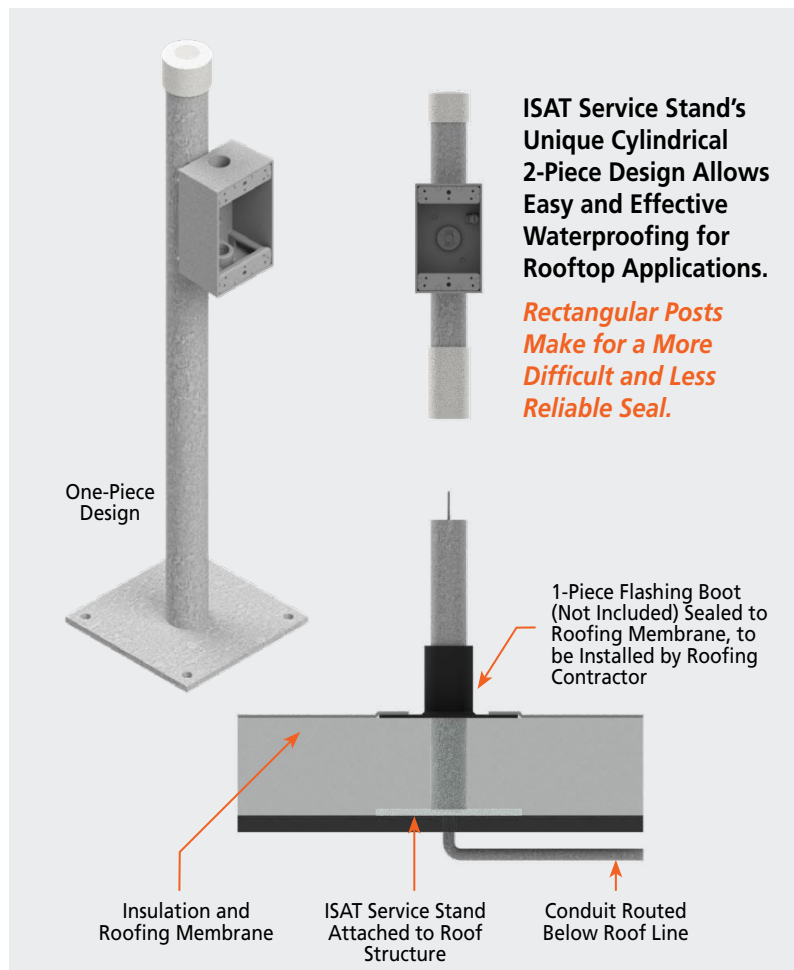
2" Dia. Stanchion provided when A=*01 or *02, 3" Dia. Stanchion provided when A=*03, 4" Dia. Stanchion provided when A=*4.

ISAT's Service Stand



ISAT's Service Stand provides an easy to install, single post support for electrical devices requiring a single or double gang box.

- Ideal for Receptacle Outlets Within 25 ft. of Equipment Per NEC 210.63
- NEMA 3R Rated Box Offers Protection from Falling Dirt, Rain, Sleet, and/or Snow (Must be Used With NEMA 3R Receptacle and Cover)
- Optional 2-Piece Design With Threaded Coupler Ideal For Rooftop Applications Requiring Waterproof Flashing
- Indoor or Outdoor Use:
 - Rooftops
 - Heating, Air-Conditioning, and Refrigeration Equipment
 - Indoor Service Equipment
 - Mechanical Rooms
 - Gardens, Atriums, Courtyards, Public Spaces
- New Construction or Retrofit Applications



Part #:

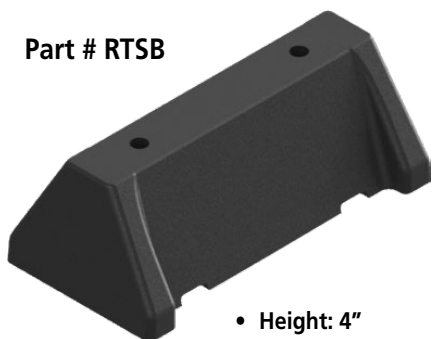
PART#	DESCRIPTION	ONE OR TWO PIECE DESIGN
ISAT SS18GB1	SINGLE GANG BOX	ONE PIECE
ISAT SS18GB2	DOUBLE GANG BOX	ONE PIECE
ISAT SS18GB1-2	SINGLE GANG BOX	TWO PIECE
ISAT SS18GB2-2	DOUBLE GANG BOX	TWO PIECE

Support Members are Hot Dip Galvanized Finish
Custom Powder Coated or Painted Finishes Available

Nonstructural Rooftop Support Bases

For installation on most types of roofing material or other flat surfaces, when positive attachment to the structure is not required.

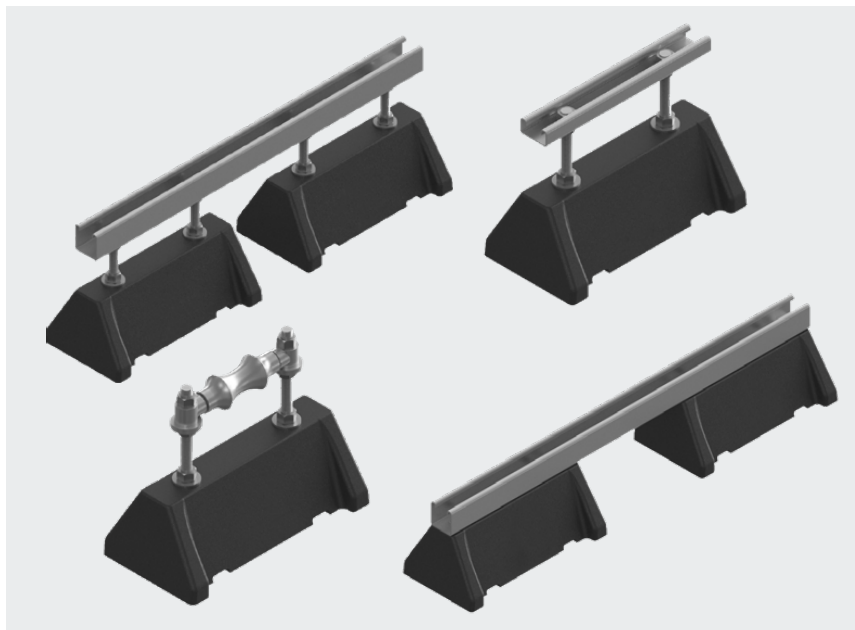
Part # RTSB



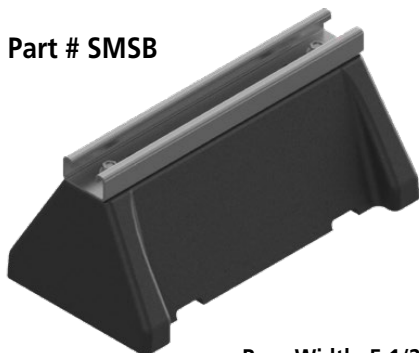
- Height: 4"
- Base Width: 5-1/2"
- Base Length: 10-3/4"
- Hole Size: 1/2"
- Max. Uniform Load: 1,700 lbs

100% Post-consumer, American recycled rubber and recycled plastic.

Base area = 23.1 sq. inches for use in bearing calculations.



Part # SMSB

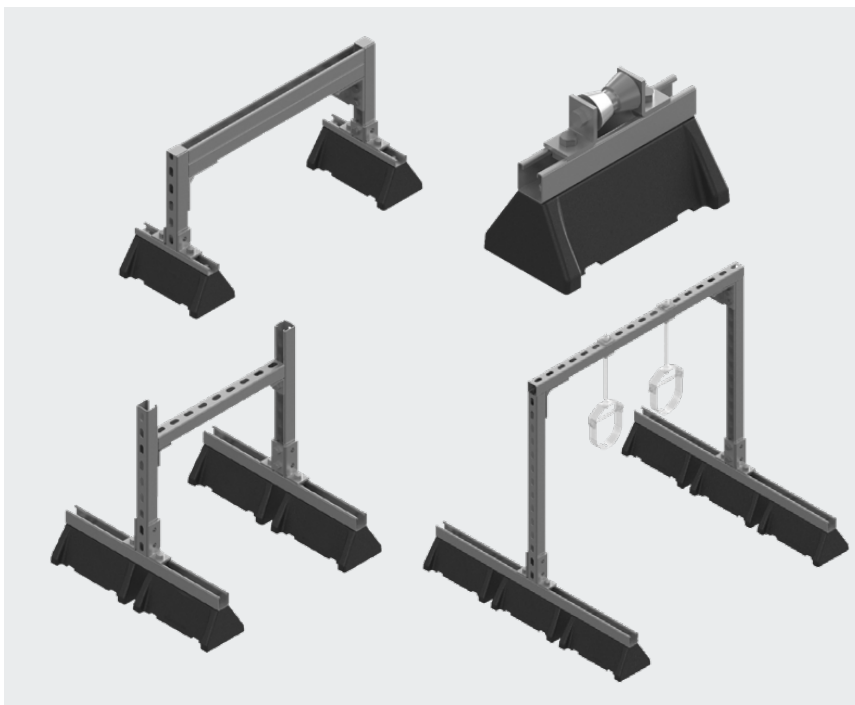


- Base Width: 5-1/2"
- Base Length: 10-3/4"
- Max. Uniform Load: 1,700 lbs

Part #	Channel Size	Total Height
SMSB13	13/16" x 1-5/8"	4-13/16"
SMSB11	1-5/8" x 1-5/8"	5-5/8"

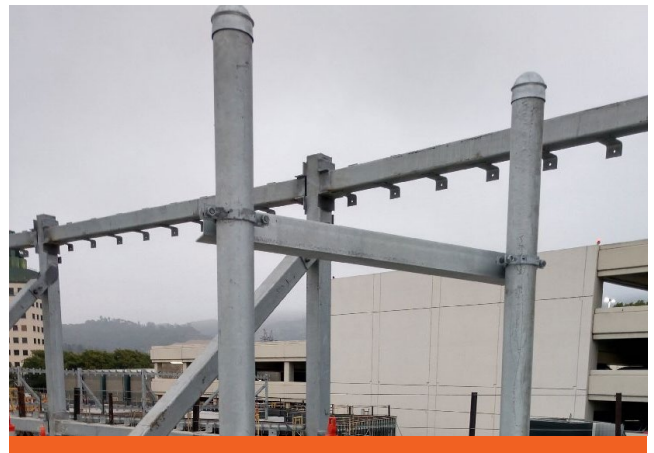
100% Post-consumer, American recycled rubber and recycled plastic.

Base area = 23.1 sq. inches for use in bearing calculations.





Application Examples



Rapid Roof

Support System

Engineered Rooftop Support Solutions

Arizona

3545 S 28th Street Building A
Phoenix, AZ 85040
PH: 602-470-0505

California (Fremont)

412 Kato Terrace
Fremont, CA 94539
PH: 510-657-1111

California (Sacramento)

8169 Alpine Ave, Ste D
Sacramento, CA 95826
PH: 916-732-2424

California (San Diego)

6490 Marindustry Dr, Ste C
San Diego, CA 92121
PH: 858-547-07000

Nevada

4125 Wagon Trail Avenue
Las Vegas, NV 89118
PH: 702-364-2606

New York

18-28 42nd Street
Astoria, NY 11105
PH: 212-259-0440

North Carolina

1020 Crews Rd, Ste Q & P
Matthews, NC 28105
PH: 704-841-4080

Ohio

100 W Old Willson Bridge Rd, Ste 201
Columbus, OH 43085
PH: 440-444-3550

Oregon

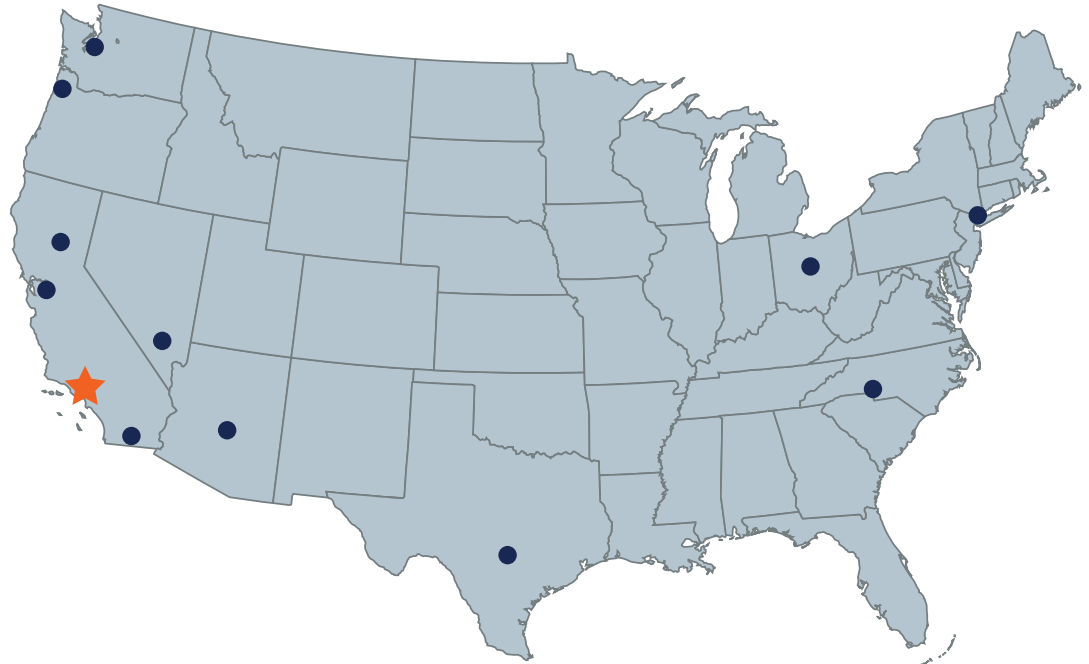
14325 NE Airport Way, Ste 101
Portland, OR 97230
PH: 503-252-4423

Texas

2500 S. Hwy 183, Bldg 4, Ste 400
Austin, TX 78744
PH: 512-910-4500

Washington

3107 142nd Ave East, Ste 102
Sumner, WA 98390
PH: 253-926-2250



CORPORATE HEADQUARTERS

Inside US: 877-999-ISAT (4728)

Outside US: 00-1-714-880-3024

SERVICES@ISATTS.COM | ISATTS.COM

14848 Northam St., La Mirada, CA 90638

ISAT
TOTAL SUPPORT

Innovation • Engineering • BIM • Fabrication

Serving the Construction Industry Since 1977

©2023 ISAT Total Support - All Rights Reserved

V 1.4